



Das EU-Projekt SUMEX und sein Beitrag zu mehr Sicherheit und Gesundheit



Michael Tost
Montanuniversität Leoben

This project has received funding from the European Union's Horizon 2020 research and innovation programme under grant agreement n° 101003622.



1

Sustainable Management in Extractive Industries

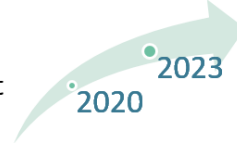


H2020 Projekt



- Antworten auf eine wichtige gesellschaftliche Herausforderung - Rohstoffnachfrage und Nachhaltigkeit

Running from



This project has received funding from the European Union's Horizon 2020 research and innovation programme under grant agreement n° 101003622.



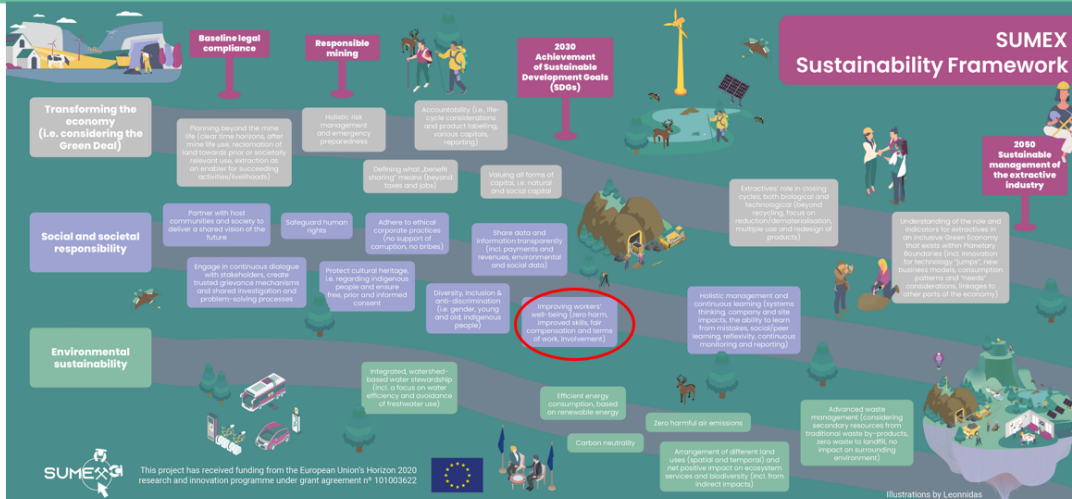
2

- Stärkung der politischen Koordination und der Nachhaltigkeit entlang der Wertschöpfungskette der Rohstoffgewinnung
 - Definition und Operationalisierung von nachhaltigem Management im EU-Kontext
 - Koordination mit anderen Projekten, um bewährte Praktiken und Grundsätze für gute Praktiken zu ermitteln
 - Analyse, bewährte Praktiken und Anwendungsfälle
 - Entwicklung eines digitalen Toolkits
 - Einrichtung einer Community of Practice (CoP)

Definition und Operationalisierung von nachhaltigem Management im EU-Kontext



Projektergebnis - Europäischer Rahmen für die Nachhaltigkeit der Rohstoffgewinnung



This project has received funding from the European Union's Horizon 2020 research and innovation programme under grant agreement n° 101003622.

Koordination mit anderen Projekten, um bewährte Praktiken und Grundsätze für gute Praktiken zu ermitteln



- Meta-Analyse von Projekten der EU, der Mitgliedstaaten und der Regionen - Rohstoffe, aber auch Projekte aus den Bereichen Landnutzung/Landschaftsplanung, Umweltplanung, Regionalentwicklung und
- Sozioökonomische Analyse
- **Lücke → Firmenpraktiken**

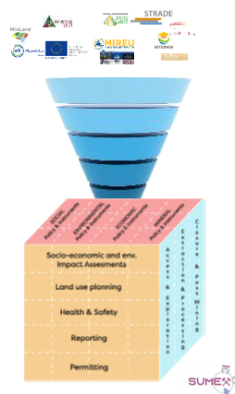


This project has received funding from the European Union's Horizon 2020 research and innovation programme under grant agreement n° 101003622.

- Analyse für Metalle / Schweden und Baumaterialien / Spanien
- Fünf Schwerpunktbereiche
- Sozial-, Umwelt-, Wirtschafts- und Rohstoffpolitik
- Abdeckung der Wertschöpfungskette in der Rohstoffindustrie



- Datenbank für anwendbares Wissen
- Digitaler Begegnungsraum zum Lernen und Austauschen - MOOC



Projektergebnis: Massive Open Online Course



The screenshot shows the FutureLearn website interface. At the top, there are navigation links for 'Subjects', 'Courses', and 'FutureLearn for business'. A search bar and 'Sign in'/'Register' buttons are also visible. The main content area features the course title 'Sustainable Management in the Extractive Industry' with a brief description: 'Explore the importance of sustainability in the extractive industry and what the solutions along 5 key action areas are'. It also states '439 enrolled on this course'. A sidebar on the right provides course details: '439 enrolled on this course', '6 weeks', '2 hours per week', 'Digital certificate when eligible', and 'Advanced level'. A prominent 'Join course' button is present. Below the course information, there is a colorful illustration of a landscape with mountains and a boat. At the bottom of the page, a green banner contains the text: 'This project has received funding from the European Union's Horizon 2020 research and innovation programme under grant agreement n° 101003622.' and the European Union flag.

This project has received funding from the European Union's Horizon 2020 research and innovation programme under grant agreement n° 101003622.



9

Projektergebnis: Datenbank mit "guten Praktiken"



The screenshot displays the SUMEX Toolkit Knowledge repository website. The header includes the SUMEX logo and navigation links: 'Concept', 'Team', 'Case studies', 'Press corner', 'Get involved', 'Contact', and 'Toolkit'. The main content area features a search bar with the text 'Enter any search text and/or use the filters below'. Below the search bar, it shows 'SUMEX repository | 209 Results' and a filter section with 'PRACTICE BASE' selected, showing 'INCIDENT AND GRIEVANCE MANAGEMENT'. A central card titled 'STAKEHOLDER FRAMES FOR THE SOCIAL LICENSE TO OPERATE' lists five categories: 'Health and safety', 'Land-use planning', 'Permitting processes / policy integration', 'Reporting official statistics', and 'Socio-economic and...'. To the right of this card, there is a detailed description of the challenge and expected impact. Further right, a 'HYPERLINK' section includes a 'View document' button and a 'SOURCE' section with details: 'Deliverable 4.3: Social License to Operate Guidelines for Europe (p.17)', 'YEAR: 2021', 'DATA ITEM TYPE: Knowledge base', 'PRACTICE TYPE: Industry Public policy', 'FORMAT: Report / document', 'LEARNING RELEVANCE: Guidelines / guidance document', and 'COMMODITY'. A QR code is located at the bottom right of the page. At the bottom of the page, a green banner contains the text: 'This project has received funding from the European Union's Horizon 2020 research and innovation programme under grant agreement n° 101003622.' and the European Union flag.

This project has received funding from the European Union's Horizon 2020 research and innovation programme under grant agreement n° 101003622.



10

Einrichtung einer Community of Practice (CoP)



- Einbindung von interessierten Personen und Peer-Learning
- Webinare, Workshops und Konferenzen
- Newsletter, Videos, Berichte, Kurzdarstellungen, usw.
- LinkedIn Gruppe



This project has received funding from the European Union's Horizon 2020 research and innovation programme under grant agreement n° 101003622.



11

Projektergebnis: Community of Practise



This project has received funding from the European Union's Horizon 2020 research and innovation programme under grant agreement n° 101003622.



12

Projektergebnis: Datenbank mit "guten Praktiken"



https://repository.sumexproject.eu/?q=&year_published=&focus_area[]=3

SUMEX repository | 99 Results Sort by ▾

FILTERS More info & Meta-data

YEAR ▾

SUMEX FOCUS AREA ▴

- Health and safety
- Land-use planning
- Permitting processes / policy integration
- Reporting official statistics
- Socio-economic and environmental impact assessments

PRACTICE TYPE ▾

EXTRACTIVE LIFE-CYCLE ▾

SUSTAINABILITY SCOPE ▾

COMMODITY ▾

FORMAT ▾

KNOWLEDGE BASE

RIOTINTO'S CLOSURE PLANNING

Every Rio Tinto-managed operation must have a robust closure plan in place. For uniformity in closure planning and management, a comprehensive Closure standard is applied to all of their activities. Additionally, it aids in identifying chances for their actions to have beneficial socioeconomic effects.

PRACTICE BASE

MINING 4.0: TECHNOLOGIES FROM THE FUTURE FOR A SUSTAINABLY DEVELOPED PRESENT (SPAIN)

Mineral extraction has a traditional character and is, from a Technology 4.0 perspective, an industry that is rather conservative in introducing new technologies. However, there has been a major development in recent years. The main elements that have determined this development are improving health and safety of workers and operations, increasing productivity, environmental responsibility and efficiency in the use of resources. Overall, the aim is to work towards an extractive sector that is more sustainable, better perceived and integrated into society and has the intention to continuously improve.



This project has received funding from the European Union's Horizon 2020 research and innovation programme under grant agreement n° 101003622. 

13

Beispiel: Bewertung der Sicherheitsleistung



Concept Team Case studies Press corner Get involved Contact Toolkit ▾

[◀ Back to results](#)

A TOOL FOR ASSESSING HEALTH & SAFETY MANAGEMENT PERFORMANCE

- Health and safety
- Land-use planning
- Permitting processes / policy integration
- Reporting official statistics

Challenge the practice is addressing: This practice addresses facility-level assessments for companies about their current standard of health & safety management. This protocol should help to provide guidelines to companies in evaluating their health & safety management by monitoring five performance indicators according to this assessment tool.

Concrete practice to achieve the expected goal: The protocol should help companies to monitor their health & safety management on a regular basis by monitoring the following five key performance indicators: 1. Corporate policy, commitment and accountability, 2. planning, implementation and operation, 3. training, behaviour and culture, 4 monitoring and reporting, 5. performance. Therefore, performance improvements can be monitored from year to year.

Expected impact/goal of the practice: The aim of this protocol is to ensure that companies follow guidelines regularly based on the five performance indicators and assist in developing the company's capacity in

HYPERLINK View document

SOURCE

"FINNISH TOWARDS SUSTAINABLE MINING (TSM) STANDARD ASSESSMENT PROTOCOL A Tool for Assessing Health & Safety Management Performance" (pages: 1, 2, 3, 5, 8, 11, 14)

YEAR 2020

DATA ITEM TYPE

Practice base

PRACTICE TYPE

Industry

FORMAT

Report / document

LEARNING RELEVANCE

Guidelines / guidance document

This project has received funding from the European Union's Horizon 2020 research and innovation programme under grant agreement n° 101003622. 

14

Beispiel: Anglo American Sicherheit und Gesundheit für Anrainer



< Back to results

COMMUNITY HEALTH & SAFETY MANAGEMENT APPROACH

- Health and safety
- Land-use planning
- Permitting processes / policy integration
- Reporting official statistics
- Socio-economic and environmental impact assessments

Challenge the practice is addressing: Community Health & Safety Management section provides guidance on how mining companies can prevent, identify, assess and mitigate potential health & safety impacts on communities.

Concrete practice to achieve the expected goal: The guidance provided in this section consists of instructions given for the 1) planning phase: defining scope, reviewing context, assessing community health & safety risks and impacts, 2) development phase: developing a Community Health & Safety Management Plan and providing adequate training to implement, carry out and monitor defined activities, 3) evaluation phase, and finally 4) reporting and adjusting phase. In addition, in the Toolbox there are several concrete tools to help users to plan and implement the management plan; 4C Tool 1 – Sample table of contents for a health impact assessment study report, 4C Tool 2 – Community health & safety areas, 4C Tool 3 – Comparison of health assessment methodologies, 4C Tool 5 – Use of external specialist HIA consultants, 4C Tool 6 – Sample matrix for a community health & safety management and monitoring plan, and 4C Tool 7 – Data sources to support monitoring and evaluation.

Expected impact/goal of the practice: The aim of the practice is to avoid, prevent, identify and mitigate potential adverse human rights and health & safety impacts on local communities during mining activities

HYPERLINK [View document](#)

SOURCE
AngloAmerican, Social Way Toolbox - 4C: Community Health & Safety Management

YEAR 2021

DATA ITEM TYPE
Practice base

PRACTICE TYPE
Industry

FORMAT
Website

LEARNING RELEVANCE
Tool(kit)

COMMODITY
Unspecified (universally applicable)

EXTRACTIVE LIFE-CYCLE
Pre-exploration (land-use planning)
Exploration
Pre-exploitation / development stage (e.g. feasibility study)

This project has received funding from the European Union's Horizon 2020 research and innovation programme under grant agreement n° 101003622.



Beispiel: Digitalisierung und Sicherheit



Back to results

DIGITIZING OPERATIONS FOR IMPROVED SAFETY

- Health and safety
- Land-use planning
- Permitting processes / policy integration
- Reporting official statistics
- Socio-economic and environmental impact assessments

Challenge the practice is addressing: The Agnico Eagle mines are leaders in technology, putting money into the newest digital cellular and automation systems to increase safety, give the staff better working conditions and also strengthen relationships with the operational communities.

Concrete practice to achieve the expected goal: Detour Lake Mine was the first mining site in Canada to have a complete 5G wireless private network connection in 2021. For the workers and contractors at Detour Lake Mine, this network adds an extra layer of connectivity, making the workplace safer. In order to maximize the usage of autonomous vehicles at its facilities, The Kittila Mine has also embraced the implementation of a 5G network. For increased safety, the Goldex Mine also remotely controls mobile equipment from the surface. An underground LTE network was set up in the Rail-Veyor ramp, a fully automated ore hauling system, to allow for real-time monitoring and communications for better and quicker derailment detection.

Expected impact/goal of the practice: To increase safety and working conditions for the staff

Who is the target user group of the practice/ intervention or implementing the practice/ intervention? This practice is relevant for companies in the extractive industry.

HYPERLINK [View document](#)

SOURCE
Sustainability Report 2021

YEAR 2021

DATA ITEM TYPE
Practice base

PRACTICE TYPE
Industry

FORMAT
Report / document

LEARNING RELEVANCE
Case study

COMMODITY
Unspecified (universally applicable)

EXTRACTIVE LIFE-CYCLE
Exploitation phase
Pre-exploitation / development stage (e.g. feasibility study)

This project has received funding from the European Union's Horizon 2020 research and innovation programme under grant agreement n° 101003622.



< Back to results

SKUS GRAVEL PLANT AS A TRAINING SITE FOR THE GERMAN FEDERAL AGENCY FOR TECHNICAL RELIEF (THW)

Health and safety

Land-use planning

Permitting processes / policy integration

Reporting official statistics

Challenge the practice is addressing: This practice addresses the usage of SKUs quarry for the emergency services of the German Federal Agency for Technical Relief and the fire brigade.

Concrete practice to achieve the expected goal: For the past three years, the quarry has served as a training ground for the German Federal Agency for Technical Relief (THW) and the fire department. A number of crisis scenarios may be excellently recreated and rehearsed for an emergency due to the wide area and the most diverse framework circumstances (dredging lake, difficult terrain in the extraction apron, high building components and technical facilities). As a result, the Leipzig regional office was able to complete a challenging large-scale exercise with its seven local divisions in a single day. The task forces of the different local units might be called together as needed for the individual exercise regions, training their cooperation and use of technology.

Expected impact/goal of the practice: The goal of this practice is to provide alternative usage to former quarry site which the entire community benefits from.

HYPERLINK

[View document](#)

SOURCE

UEPO Sustainable Development Award Nominee

YEAR

2022

DATA ITEM TYPE

Practice base

PRACTICE TYPE

Industry

FORMAT

Report / document

LEARNING RELEVANCE

Case study

COMMODITY

Unspecified (universally applicable)
Construction minerals (aggregates)



Glück auf!

michael.tost@unileoben.ac.at

