



DG TAXUD

ICS2 Release 1 Operational guidance for express carriers

ICS2

Date: 03/03/2021
Doc. Version: 1.00

General disclaimer

This guidance document is of an explanatory and illustrative nature. Customs legislation takes precedence over the content of this document and should always be consulted. The authentic texts of the EU legal acts are those published in the Official Journal of the European Union. There may also be national instructions.

This guidance document has been drafted together with the ICS2 Project Group under Customs 2020 programme.

Document Control Information

Settings	Value
Document Title:	ICS2 Release 1 Operational guidance for express carriers
Project Title:	ICS2
Document Author:	ICS2 Project team
Project Owner:	ICS2 Project team
Project Manager:	ICS2 Project team
Doc. Version:	1.00
Sensitivity:	Basic
Date:	03/03/2021

Document Approver(s) and Reviewer(s):

NOTE: All Approvers are required. Records of each approver must be maintained. All Reviewers in the list are considered required unless explicitly listed as Optional.

Name	Role	Action	Date

Document history:

The Document Author is authorized to make the following types of changes to the document without requiring that the document be re-approved:

- Editorial, formatting, and spelling
- Clarification

To request a change to this document, contact the Document Author or Owner.

Changes to this document are summarized in the following table in reverse chronological order (latest version first).

Revision	Date	Created by	Short Description of Changes
0.01	28/08/2020	DG TAXUD	Draft version
0.02	22/01/2021	DG TAXUD	Internal review
0.03	09/02/2021	DG TAXUD	Published for external review with MS and Trade
1.00	03/03/2021	DG TAXUD	Published for acceptance

TABLE OF CONTENTS

1	INTRODUCTION	6
1.1	Purpose	6
1.2	Scope	6
1.3	Target Audience	6
1.4	Structure of this document	6
1.5	Reference and applicable documents	8
1.5.1	Reference Documents	8
1.6	Abbreviations and Acronyms	8
1.7	Definitions	9
2	GLOBAL PROCESS OVERVIEW.....	11
3	ICS2 RELEASE 1 SCOPE	12
4	LEGAL ASPECTS	13
4.1	Legal background	13
4.2	Registration of the economic operator for ENS lodgement	13
4.3	How to obtain EORI number?	13
4.4	Who is obliged to lodge the ENS?	13
4.5	Where is the ENS to be lodged?	13
4.6	Single/multiple filing	14
4.7	Waivers from the obligation to lodge an ENS	14
4.8	Economic operator roles and their responsibilities	14
4.8.1	Declarant	14
4.8.2	Representative	14
4.8.3	Person filing	15
4.8.4	IT service provider	15
4.8.5	Consignor	15
4.8.6	Consignee	15
4.9	Timelines	15
4.9.1	Submission of air pre-loading (PLACI) data	15
4.9.2	Risk analysis	15
4.9.3	Loading of goods onto the aircraft	15
4.9.4	Presentation notification	16
4.9.5	Control notification	16
5	ICS2 PROCESS PHASES.....	17
5.1	Lodge ENS and dispatch goods items	17
5.1.1	Create IE3F32 and submit to ICS2	17
5.1.2	IE3F32 received by ICS2	17
5.1.3	Perform risk analysis	18
5.1.4	Risk analysis results available	18
5.2	Presentation and control	18
5.2.1	Goods presented to Customs office of presentation	18
5.2.2	Perform control	19
5.2.3	Subsequent customs procedure	19
5.3	Amendment	19
5.4	Invalidation	20
5.5	Business continuity	20
6	DATA REQUIREMENTS	21

ANNEX 1 INFORMATION EXCHANGES FOR EXPRESS CARRIERS 22

TABLE OF TABLES

Table 1: Reference documents 8
Table 2: Abbreviations and acronyms..... 9
Table 3: Definitions 10

TABLE OF FIGURES

Figure 1: Global process overview 11
Figure 2: Workflow of the referrals..... 11
Figure 3: Process phases 17

1 INTRODUCTION

1.1 Purpose

The ICS2 is a system supporting the following processes:

- lodgement of the Entry Summary Declaration (ENS) to customs;
- Amendment of a lodged ENS;
- Invalidation of a lodged ENS;
- Security and safety risk analysis by customs;
- Referrals;
- Arrival of means of transport;
- Presentation of goods to customs;
- Control of goods by customs, where decided.

The ICS2 will be developed and deployed in three different releases. Each release adds additional functionality and capabilities as follows:

- Release 1 – lodgement of pre-loading minimum data set (PLACI) for air express and postal consignments and presentation process for postal consignments;
- Release 2 – lodgement of the complete ENS for all goods in air traffic, lodgement of the arrival notification for all arriving aircrafts and presentation process for air express consignments and general air cargo;
- Release 3 – lodgement of the complete ENS for maritime, inland waterways, road and rail traffic (this includes goods in postal and express consignments transported in these means of transport), lodgement of the arrival notification for maritime means of transport and presentation process for all goods on all modes of traffic.

The purpose of this document is to provide operational guidance for express carriers for the ICS2 Release 1 scheduled for 15 March 2021.

1.2 Scope

This document provides an operational guidance for the express carriers on processes implemented within the ICS2 and operational environment of the involved stakeholders.

The document will cover all the processes of the ICS2 Release 1.

1.3 Target Audience

The intended audience for this document are:

- the representatives of the Member States,
- the representatives of express carriers;
- any person involved in the ICS2 project;
- Any person being practically involved in the customs formality for the entry of goods for express consignments.

1.4 Structure of this document

The present document contains the following chapters:

- **Chapter 1 – Introduction:** describes the scope and the purpose of the document;
- **Chapter 2 – Global process overview:** describes the overview of the ICS2 process from the perspective of the express carriers;
- **Chapter 3 – ICS2 Release 1 Scope:** describes the scope of ICS2 R1 for the express carriers;
- **Chapter 4 – Legal aspects:** the legal background of ICS2 R1 for the express carriers;

- **Chapter 5 – ICS2 Process phases:** describes ICS2 R1 business processes for the express carriers;
- **Chapter 6 – Data requirements:** points to the information exchanges for the express carriers for ICS2 R1;
- **Annex 1 Information exchanges for express carriers.**

1.5 Reference and applicable documents

1.5.1 Reference Documents

Ref.	Title	Reference	Version	Date
R01	ICS2 Harmonised Trader Interface Specifications	ICS2-HTI	1.15	08/01/2020
R02	ICS2 Business Continuity Plan	ICS2 BCP	1.00	11/02/2020
R03	REGULATION (EU) No 952/2013 OF THE EUROPEAN PARLIAMENT AND OF THE COUNCIL of 9 October 2013 laying down the Union Customs Code	UCC		
R04	COMMISSION DELEGATED REGULATION (EU) 2015/2446 of 28 July 2015 supplementing Regulation (EU) No 952/2013 of the European Parliament and of the Council as regards detailed rules concerning certain provisions of the Union Customs Code	UCC-DA		
R05	COMMISSION IMPLEMENTING REGULATION (EU) 2015/2447 of 24 November 2015 laying down detailed rules for implementing certain provisions of Regulation (EU) No 952/2013 of the European Parliament and of the Council laying down the Union Customs Code	UCC-IA		
R07	EU guidance on air cargo security referral protocols for ICS2		1.15	24/01/2020

Table 1: Reference documents

1.6 Abbreviations and Acronyms

Abbreviation/Acronym ICS 2	Definition
AC	Assessment Complete
AEOS	Authorised Economic Operator authorised for security and safety
AVSEC	Aviation security
COFE	Customs Office of First Entry
DNL	Do Not Load
ENS	Entry Summary Declaration
EO	Economic operator
EORI	Economic Operators Registration and Identification number
EU	European Union
HAWB	House air waybill
HC	House consignment
HRCM	High Risk Cargo and Mail
HTI	Harmonised Trader Interface
ICAO	International Civil Aviation Organization
ICS Phase 1	Import Control System Phase 1
ICS2	Import Control System 2
IE	Information exchange
IED	Improvised explosive device
IID	Improvised incendiary device

JWGACI	Joint ICAO WCO Working Group on Advance Cargo Information
LRN	Local Reference Number
MAWB	Master air waybill
MRN	Master Reference Number
MS	Member State
PLACI	Pre-loading advance cargo information
RFI	Request for Information
RFS	Request for Screening
UCC	Union Customs Code [Regulation (EU) No 952/2013 of the European Parliament and of the Council of 9 October 2013 laying down the Union Customs Code]
UCC-DA	Commission Delegated Regulation (EU) 2015/2446 of 28 July 2015 supplementing UCC as regards detailed rules concerning certain provisions of the UCC
UCC-IA	Commission Implementing Regulation (EU) 2015/2447 of 24 November 2015 laying down detailed rules for implementing certain provisions of the UCC
WCO	World Customs Organisation

Table 2: Abbreviations and acronyms

1.7 Definitions

Term	Definition
Customs office of presentation	The customs office locally competent for the approved place of presentation of the goods to customs.
Harmonized System (HS)	Harmonized System for the Classification of Goods of the World Customs Organization
House consignment	In ICS2 this term refers to a created entity based on the information about a consignment from a house level transport contract issued by a freight forwarder, non-vessel operating common carrier or agent to its direct contracting party (customer).
House consignment item	Contained items of a House consignment which require an own House consignment goods item declaration.
House consignment goods item	The House consignment goods item level is a sub-level to the House consignment level for the declaration of the different goods contained in the House consignment. Goods items which are to be classified under different HS-codes require a separate goods item declaration within the House consignment declaration of a F32 ENS filing. The data elements of the House consignment item level contain information that originate from different positions in the transport document referred to in the current House consignment.
Member State	All European Union Member States and other countries and territories applying EU customs legislation in the context of entry formalities and ICS2.
Presentation	Presentation to customs means notifying to customs that goods under customs supervision have arrived and are physically available for a (potential) control at the customs office of presentation.
PLACI data	Pre-loading advance cargo information (PLACI) comprise consignor name and address, consignee name and address, number of packages, gross weight, goods description and transport reference number (HAWB/MAWB).
PLACI risk analysis	In the case of air cargo pre-loading, the risk analysis process is triggered at the moment of receipt of the required minimum 7+1 PLACI data. The process is only focused on the detection of an immediate risk to aviation posed by an assembled improvised explosive device (IED) or improvised incendiary device (IID) aka 'bomb in the box' introduced on board an aircraft that could lead to the destruction of the plane and/or the loss of

	<p>lives. The PLACI analysis is therefore not intended to assess or confirm the effectiveness of aviation security measures applied by the supply chain actors nor measure the compliance with these regulations or duplicate them. In the case of air transport (general cargo, postal consignments, express consignments), the pre-loading risk analysis may identify security and safety risks other than the one described above. While this result is taken into account in the further process of risk analysis at the pre-arrival stage, it does not stop the goods to be loaded on the plane at the point of departure into the EU.</p>
Master Reference Number	<p>Master Reference Number means the registration number allocated by the competent customs authority to declarations or notifications. The MRN is assigned for each ENS filing registered by the customs authorities and communicated back to the person filing.</p>

Table 3: Definitions

2 GLOBAL PROCESS OVERVIEW

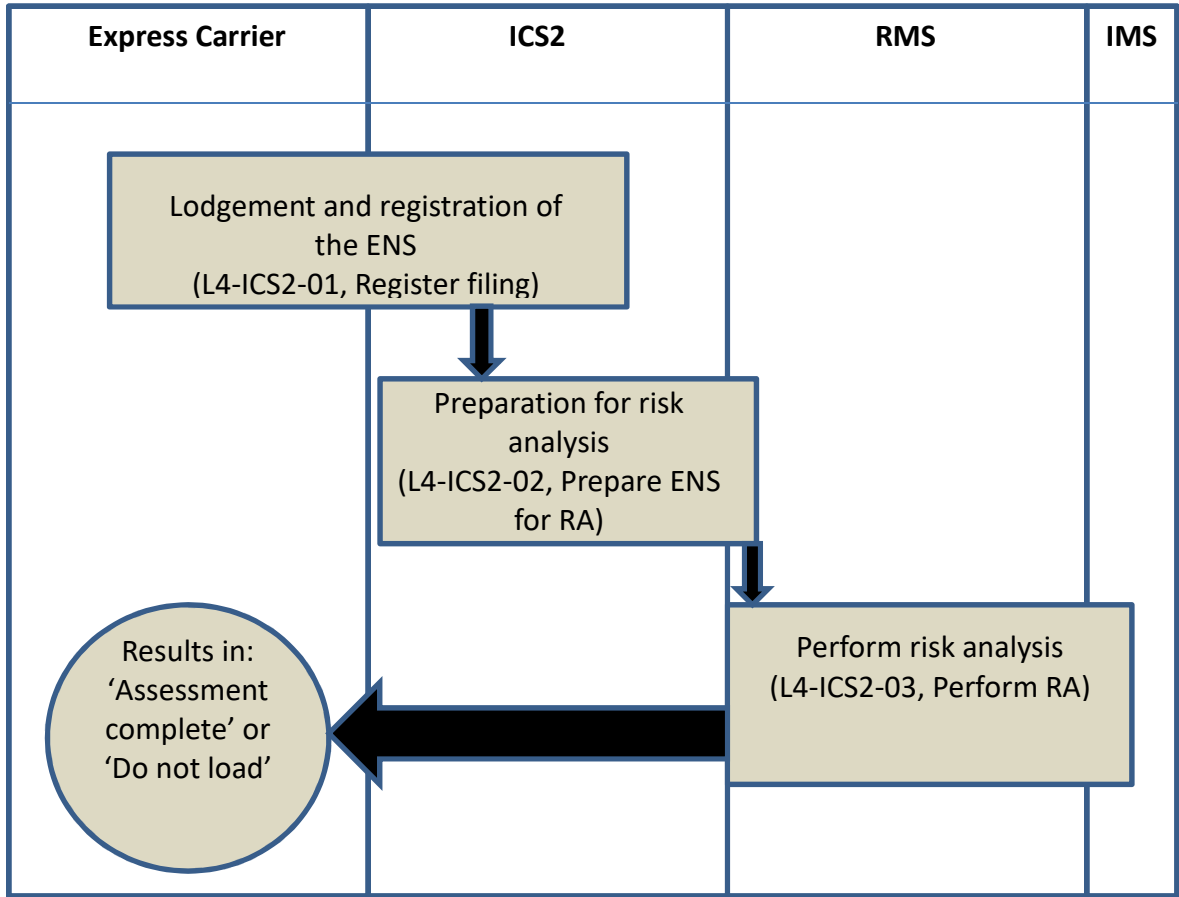


Figure 1: Global process overview

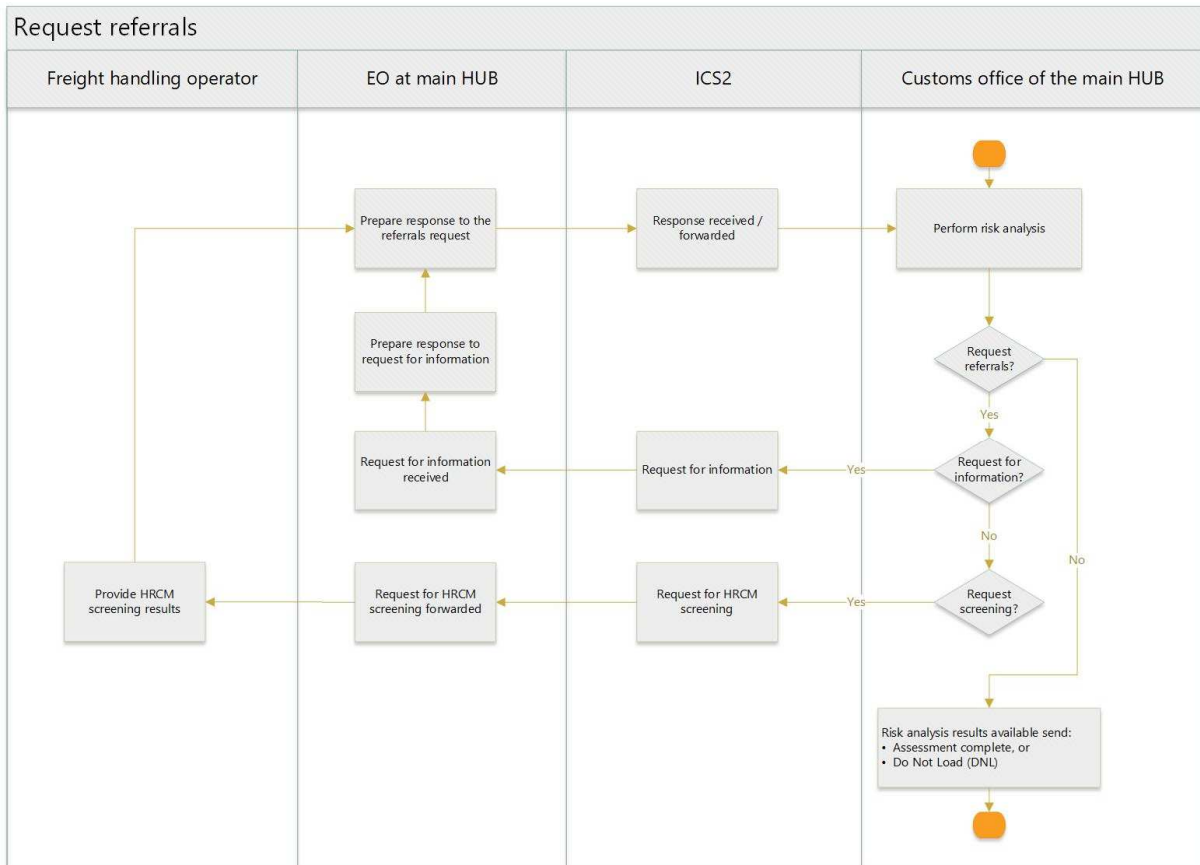


Figure 2: Workflow of the referrals

3 ICS2 RELEASE 1 SCOPE

During the operations of ICS2 Release 1, express carriers are obliged to provide PLACI data (message IE3F32) for performing a safety & security risk analysis prior to the loading of goods onto an aircraft with a destination in the EU. Regarding waivers from the aforementioned legal obligation consult subsection 4.7.

The complete ENS (pre-arrival) is to be lodged via the ICS Phase 1 until ICS2 Release 2 becomes operational.

4 LEGAL ASPECTS

4.1 Legal background

The legal base for the requirement to lodge an ENS is defined in Article 127 UCC [R03].

The intention of this customs formality is to obtain cargo information in advance (before the goods enter the customs territory of the EU) for a safety & security risk analysis performed by the competent customs authority. The UCC foresees the integration of AVSEC into the customs formality for the entry of goods. Hence follows, that all air cargo consignments need to be declared with a minimum data set (PLACI) as soon as possible but definitely before the goods/consignments are loaded onto an aircraft at the airport of departure. Integrated AVSEC measures are based on the JWGACI recommendations. In case of transport by air in fact two risk analyses are performed, the first one prior to loading of the goods onto an aircraft, which is dedicated to AVSEC (find the bomb in the box), the second one prior to arrival of the goods, taking into account all kinds of safety & security risks.

During ICS2 Release 1 operations only the PLACI information is to be lodged in ICS2 via the message IE3F32. In addition to the PLACI ENS filing in ICS2 Release 1, the express operators need to lodge full ENS for pre-arrival in ICS Phase 1 at the COFE.

4.2 Registration of the economic operator for ENS lodgement

EO who actively want to perform customs formalities in the EU need to be registered with customs. Registered EOs are assigned an EORI number, which they use within all communication with customs for identification.

EU resident EOs, which are not yet registered need to apply for it in the MS where they are established.

4.3 How to obtain EORI number?

In general, an EORI number can be applied for in all MS. EO established in the EU need to apply for it in the MS of establishment. For the application form and the competent authority please consult the Website of your national customs administration. EO established in a third country can apply for it in the MS where they first take up business operations or where they intend to operate relevant facilities. One legal entity can apply for exactly one EORI number only.

4.4 Who is obliged to lodge the ENS?

The obligation to lodge the ENS is in general with the carrier being responsible for the transport of the goods into the customs territory of the EU. The ENS can instead be lodged by the importer or consignee of the goods or by any person who is able to present or has presented the goods to customs. In practice the vast majority of the ENS will be lodged by the carrier and the alternative persons mentioned above can be neglected in the express business model [Article 127 (4) R03].

In cases, where not all particulars required for an ENS can be obtained from the carrier other persons holding those particulars may be required to provide those particulars to customs [Article 127 (6) R03]. This does in general not apply for the express business model.

4.5 Where is the ENS to be lodged?

In general the ENS shall be lodged at the customs office of first entry [Article 127 (3) UCC].

Express carriers need to lodge their PLACI ENS filing to the MS where the goods most likely arrive first in the EU (main HUB). The PLACI ENS filing is to be lodged via ICS2 with regard to Article 182 (1) UCC-IA [R05]

In addition to the PLACI ENS filing in ICS2 Release 1, the express operators need to lodge full ENS for pre-arrival in ICS Phase 1 at the COFE.

4.6 Single/multiple filing

The ENS can be lodged either in form of a single ENS filing or by more than one ENS filing. The latter one applies where the carrier does not have all required particulars available to lodge timely a complete ENS in a single file.

Express carriers will lodge their ENS in general in two steps. The PLACI ENS filing is lodged in ICS2 Release 1 via IE3F32. In addition to the PLACI ENS filing in ICS2 Release 1, the express operators need to lodge full ENS for pre-arrival in ICS Phase 1 via IE315 at the COFE.

From the beginning of ICS2 Release 2 operations on the pre-arrival ENS will have to be lodged in ICS2 for express consignments.

4.7 Waivers from the obligation to lodge an ENS

With regard to the business of express carriers items of correspondence do not require to be covered by an ENS. The term 'items of correspondence' covers postcards and letters that do not contain any goods. Letters containing goods need to be covered by an ENS. It is therefore important to obtain that information already at the place of acceptance of the consignment from the person sending the letter that does not contain items of correspondence only.

No ENS is required for goods on means of transport, which are passing through the territorial waters, or the airspace of the customs territory of the EU without stopping within this territory.

The waiver from the obligation to lodge an ENS as referred to in Article 104 (1) (h) UCC-DA applies to all military authorities of a NATO member country when the goods entering the Union are covered by a NATO form 302.

The waiver from Article 104 (1) (i) UCC-DA does not apply to third country military authorities since they are solely applicable to the military authorities of a MS of the European Union. Third country military authorities, even NATO members, are not in charge of the military defence of a MS of the European Union. Only military authorities of MS can be in that role. The express carrier can omit the ENS where weapons or military equipment are transported on behalf of a military authority of a MS of the European Union and the transport is solely performed for that military authority, meaning that no other consignments are transported on the same means of transport. The direct contracting party has to be the military authority of a MS.

The waiver for consignments with an intrinsic value not exceeding 22 Euros does not apply anymore for ICS2 operations. Hence follows, that all express consignments where no other waiver applies have to be covered by a PLACI ENS filing IE3F32 during ICS2 Release 1 operations. In addition, the express operators need to lodge full ENS for pre-arrival in ICS Phase 1 at the COFE.

For this reason no complete pre-arrival ENS needs to be lodged for express consignments with an intrinsic value not exceeding 22 Euros until the beginning of ICS2 Release 2 operations.

For a complete survey of all waivers from the obligation to lodge an ENS please consult Article 104 UCC-DA [\[R04\]](#)

4.8 Economic operator roles and their responsibilities

4.8.1 Declarant

The declarant in this context is the person lodging an ENS or particular ENS filings in his or her own name or the person in whose name an ENS or particular ENS filing is lodged. The declarant is legally responsible for the timely lodgement within the legal deadlines and the accuracy of the content of the ENS or particular ENS filing.

4.8.2 Representative

A declarant can appoint a representative to create and lodge the ENS or particular ENS filing in the name and on behalf of the declarant (direct representation) or in the representative's name but on behalf of the declarant (indirect representation). In case of direct representation the declarant is held legally responsible as if he had lodged the ENS or particular ENS filing himself as above. The direct representative is liable with regard to his declarant but not regarding the customs authorities.

4.8.3 Person filing

The person who has created and lodged an ENS filing. It either is the declarant or in case of representation the representative.

4.8.4 IT service provider

The IT-service provider is the person operating an access point to ICS2 who technically submits and receives electronic messages for declarants and representatives. It is not a declarant or representative for the reason that it electronically submits electronic messages to customs. Nevertheless, an IT service provider can be a representative in parallel when customs representation services are provided as well. A declarant who is operating an own access point to ICS2 for own submissions without providing services for other declarants and representatives is not considered to be an IT-service provider.

4.8.5 Consignor

The consignor is the sender of the consignment.

4.8.6 Consignee

The consignee is the recipient of the consignment. This is the person the express carrier has to deliver the parcel to in order to fulfil the transport contract.

4.9 Timelines

4.9.1 Submission of air pre-loading (PLACI) data

In case of transport by air, the PLACI ENS filing shall be lodged as early as possible [Article 106 (1) UCC-DA] [\[R04\]](#). The term 'as early as possible' means that the ENS is to be lodged as soon as all required particulars of the ENS are available to the person filing.

The complete pre-arrival ENS lodged in ICS Phase 1 is to be lodged within the regular time limits currently applied:

- For flights with a duration less than four hours from the last airport outside of the customs territory of the EU at the time the aircraft takes off;
- For flights with a duration of four hours or more four hours prior to arrival of the aircraft at the first airport in the customs territory of the EU.

4.9.2 Risk analysis

Customs authorities in the EU perform an air pre-loading risk analysis immediately after a PLACI ENS filing was lodged and registered.

In addition to the PLACI ENS filing in ICS2 Release 1, the express operators need to lodge full ENS for pre-arrival (full safety & security risk analysis) in ICS Phase 1 at the COFE.

4.9.3 Loading of goods onto the aircraft

The result of the air pre-loading risk analysis can have two different outcomes:

- The HC is not considered to be a serious threat to aviation security.
- The HC is considered to be a serious threat to aviation security.

In the first case ICS2 will send an assessment complete notification (IE3N03 message) to the person filing where this person has subscribed to receive such notification in its preferences. In the second case the person filing will receive a 'Do Not Load' request (IE3Q01 message) which is not subject to EO preferences and is therefore always sent in this case.

Although the reception of the assessment complete notification is on a voluntary basis, its subscription is highly recommended in order to avoid premature loading of consignments.

4.9.4 Presentation notification

The express carrier is required to present the goods at the customs office where the goods are unloaded from the aircraft that brought them into the customs territory of the EU. The presentation notification needs to refer to the previously lodged ENS. In case of express consignments the reference during ICS2 Release 1 operations is the MRN assigned to the complete pre-arrival ENS filing lodged at the COFE in ICS Phase 1 that covers the goods to be presented or any other unique reference according to local procedures at the customs office of presentation. The presentation notification is to be lodged outside of the ICS2 with the national system dedicated for the presentation of goods of the customs office of presentation. For the access and requirements please consult the published information of the respective national customs administration.

4.9.5 Control notification

The control notification is an electronic message sent by the national customs authorities to the person presenting the goods to inform them that certain presented goods were selected for a control at the customs office of presentation. This notification is sent not via ICS2 but national system.

This message can be received either:

- By the person filing prior to presentation when this person holds the AEOS status; or
- By the person presenting the goods upon presentation when the person filing does not hold the AEOS status.

5 ICS2 PROCESS PHASES

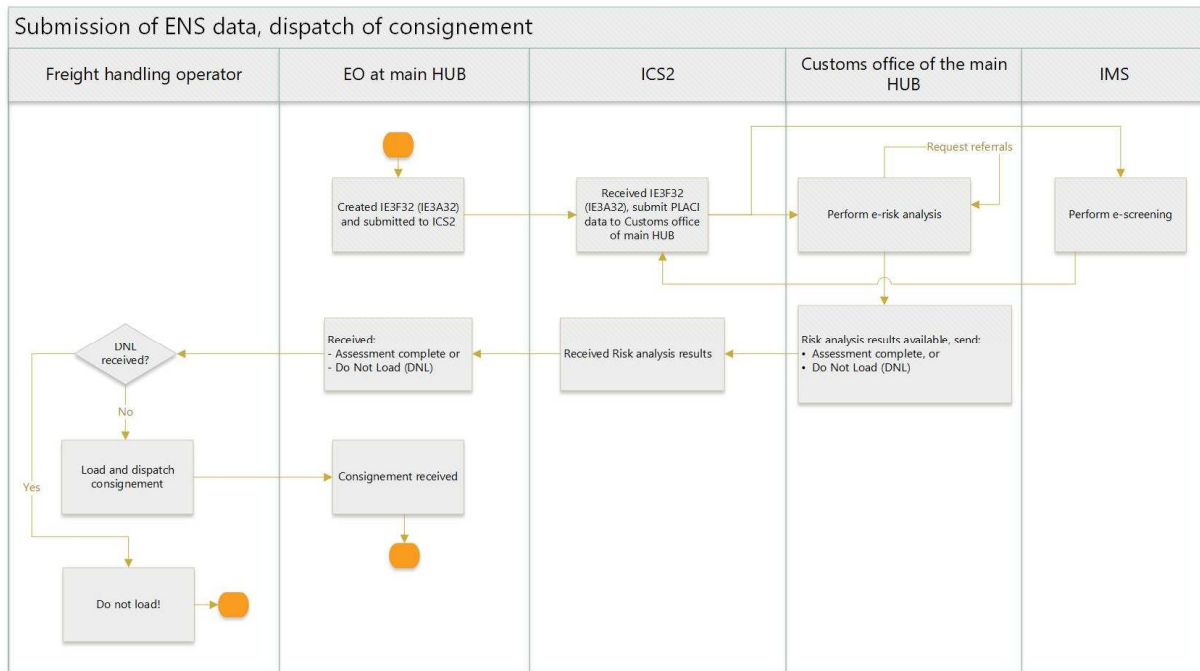


Figure 3: Process phases

5.1 Lodge ENS and dispatch goods items

In ICS2 Release 1 the following responses/requests can be sent upon an ENS filing:

- ENS registration acceptance response (IE3R01) = one per ENS filing;
- Error notification (IE3N99) = one per ENS filing;
- ENS lifecycle validation error (IE3N01) = one per ENS filing;
- RfI request (IE3Q02) = one or more for a HCs;
- RfS request (IE3Q03) = one or more for a HCs;
- DNL request (IE3Q01) = one for a HC.
- Assessment complete (IE3N03) = one per HC.

5.1.1 Create IE3F32 and submit to ICS2

As soon as the required data for the PLACI ENS filing IE3F32 is available this message shall be generated and sent to ICS2.

5.1.2 IE3F32 received by ICS2

ICS2 performs syntactical, semantical and lifecycle validation of received IE3F32. In case of positive validation:

- IE3F32 is stored and further processed by the ICS2 and the person filing receives an ENS registration acceptance response IE3R01 with the MRN assigned by ICS2 to the filing, or
- Error messages IE3N99 or IE3N01 are sent to the person filing in case lodged IE3F32 did not pass the validation.

If error notification IE3N99 was received, the IE3F32 failed the syntactical and/or semantical validation and was therefore rejected by ICS2. In this case it will not be further processed. The person filing has to lodge a new

corrected IE3F32. The correction needs to encompass all errors that were indicated in the IE3N99 error message in order to pass the syntactical/semantical validation.

If ENS lifecycle validation error notification IE3N01 was received, one or more HCs covered by the ENS filing IE3F32 was/were either in a wrong state or a duplicate. Wrong states can be neglected since the IE3F32 is not associated to pre-arrival ENS filings or referred to in the presentation during ICS2 Release 1 operations. In case of a duplicate the person filing needs to investigate what the reason was. Three cases are to be differentiated:

- It was indeed a redundant duplicate. No follow up action is required.
- The person filing wanted to amend an existing HC already declared. The amendment information needs to be sent as ENS filing amendment IE3A32 instead of IE3F32.
- HC reference was erroneously captured. The HC reference needs to be corrected and the ENS filing IE3F32 with corrected information to be re-sent.

5.1.3 Perform risk analysis

The competent customs authorities perform PLACI risk analysis on HCs in registered ENS filings.

In some cases the customs risk analyst may address referral requests to the person filing before taking a decision on the risk analysis results. There are two different referral types in which the first one divides into two different sub-types:

- Request for additional information which can either ask for additional information that was not contained in the original IE3F32 (for example, to provide electronic copies of documents or to confirm data of the ENS filing; referral request type is 'request for information, code 'RFI') or a request for amendment of the original ENS filing (for example to correct contradicting or insufficient information or data; referral request type is 'request for amendment, code 'AMD'). The request for additional information is to be answered by RfI response IE3R02, the request for amendment by the respective amendment ENS filing for the ENS filing referred to in the request (for example IE3A32 for the amendment of an IE3F32 on which a referral request with type code 'AMD' was issued).
- Request to perform HRCM screening on a HC which is to be answered by RfS response IE3R03.

For more details regarding the handling of referrals please consult EU guidance on air cargo security referral protocols for ICS2 (R07).

5.1.4 Risk analysis results available

The result of the PLACI risk analysis can have to different outcomes:

- The HC is not considered to be a serious threat to AVSEC;
- The HC is considered to be a serious threat to AVSEC.

In the first case ICS2 will send an assessment complete notification (IE3N03 message) to the person filing where this person has subscribed to receive such notifications in its preferences. The reception of this notification means that no air cargo security threat is identified at the time when analysis was done (e.g. on the basis of available knowledge, intelligence at that point of time).

In the second case the person filing will receive a DNL request (IE3Q01 message) which is not subject to EO preferences and is therefore always sent in this case. When such request was received the person filing should enable the respective security protocols to be followed and applicable at the place of departure for those security alerts.

Although the reception of the assessment complete notification is on a voluntary basis, its subscription is highly recommended in order to avoid premature loading of consignments.

5.2 Presentation and control

5.2.1 Goods presented to Customs office of presentation

The express carrier is required to present the goods at the customs office where the goods are unloaded from the aircraft that brought them into the customs territory of the EU. The presentation notification needs to refer to the previously lodged ENS. In case of express consignments the reference during ICS2 Release 1 operations is

the MRN assigned to the complete pre-arrival ENS filing lodged at the COFE in ICS Phase 1 that covers the goods to be presented or any other unique reference according to local procedures at the customs office of presentation. The presentation notification is to be lodged outside of the ICS2 with the national system dedicated for the presentation of goods upon their entry in the EU at the customs office of presentation. For the access to the national system and requirements of the presentation please consult the published information of the respective national customs administration.

5.2.2 Perform control

Where control was not already notified in advance (only possible when person filing is AEOS) the customs office of presentation will notify the person presenting the goods about decided controls via the dedicated national system.

5.2.3 Subsequent customs procedure

After presentation of the goods or where customs decided on a control after performance of that control and its results allow for, the goods might be released for a subsequent customs procedure in accordance with the relevant provisions in place for that procedure.

5.3 Amendment

In ICS2 Release 1 there are only few data elements that can be amended, e.g.:

- Goods description (unacceptable goods description amended);
- Gross mass (correction of gross mass);
- Number of packages (correction of number of packages);
- Consignor/Consignee details (spelling of the name, address details).

In general there are two reasons for an amendment of the original ENS filing:

- A referral request for amendment (request type code AMD) as outlined in subsection 5.1.3 or
- A need for amendment was identified by the person filing itself. This case will in particular be relevant when data for a given consignment was originally wrong or changed after the submission of the original ENS filing IE3F32.

Where the amendment was initiated by a referral request (AMD) the referral request reference has to be inserted in the respective amendment message. Else the amendment will not be recognised as an answer to the original referral request by ICS2.

An ENS filing IE3F32 is to be amended by its respective amendment filing IE3A32. Also already amended original filings can be further amended. Sample messages of the amendment filings can be found in the referral guidance document [R07].

Amendments of ENS filings are possible until either:

- The goods covered by the ENS filing to be amended have been presented to customs, or
- Where the customs office has already notified a control for the goods covered by the ENS filing to be amended.

The amendment restrictions above apply to all HCs contained in the original ENS filing. This means, if only one HC of the original ENS filing is presented, no HC contained in that ENS filing can be amended anymore. The same applies for notified controls.

Elements (classes and attributes) of the ENS filing where rule R3024 [R01] is assigned cannot be amended.

For the IE3F32 these elements are:

- Local Reference Number (LRN);
- Document issue date;

- Specific circumstance indicator;
- Addressed Member State;
- Declarant/identification number;
- Representative/identification number;
- Transport document (House Level).

No new HCs can be introduced and no new goods items of an existing HC can be inserted in an amendment message. New HCs are to be declared by new IE3F32. Where a need exists to declare additional goods items for an existing HC, the original filing IE3F32 needs to be invalidated by submitting an invalidation request (IE3Q04 message). After the invalidation acceptance response (IE3R07 message) was received, a new corrected IE3F32 can be submitted.

Where only particular but not all HCs of an ENS filing IE3F32 are shipped an amendment of the respective original ENS filing can be submitted, which does not contain the not shipped HCs anymore. The ICS2 CR will invalidate the HCs that were no longer present in the amendment filing.

5.4 Invalidation

There are three existing ways for invalidation to consider:

- EO sends an invalidation request (IE3Q04 message) to ICS2. Where accepted, all HCs of the respective ENS filing referred to in the invalidation request will be invalidated;
- All HCs will be automatically invalidated after 200 days from the registration date of the ENS filing when they were not presented to customs within this period of time;
- By amendment as described in section 5.3.

Invalidation of ENS filings are possible until either:

- The goods covered by the ENS filing to be invalidated have been presented to customs, or
- Where the customs office has already notified a control for the goods covered by the ENS filing to be invalidated.

The invalidation restrictions above apply to all HCs contained in the original ENS filing. This means, if only one HC of the original ENS filing is presented, no HC contained in that ENS filing can be invalidated anymore. The same applies for notified controls.

5.5 Business continuity

In case an EO is unable to submit the PLACI ENS filing via the ICS2 for the reason of unavailability of own system or its connection to the HTI, the ICS2 Business Continuity Plan [\[R02\]](#) applies. Please consult and follow the instructions of ICS2 Business Continuity Plan [\[R02\]](#).

6 DATA REQUIREMENTS

A view of the data elements required in the ENS filing IE3F32 is attached in Annex 1.

ANNEX 1 INFORMATION EXCHANGES FOR EXPRESS CARRIERS

This annex provides the data elements of the following messages that are to be sent by express carriers during ICS2 Release 1 operations:

- ENS filing (minimum air pre-loading) IE3F32;
- Amendment (ENS filing IE3F32) IE3A32;
- Rfl response (response for Rfl type 'request for information') IE3R02;
- RfS response (response for RfS 'request for HRCM screening') IE3R03;
- Request for invalidation (of a submitted ENS filing) IE3Q04.

Occurs	Name	Status	Format	CL	Rules	Conditions
	IE3F32					
1..1	—LRN	M	an..22		R3003	
1..1	—Document issue date	M	an20 (YYYY-MM-DDThh:mm:ssZ)			
1..1	—Specific circumstance indicator	M	an3	CL742		
1..1	—Addressed Member State	M				
1..1	—Country	M	a2	CL717		
0..1	—Representative	O				
1..1	—Name	M	an..70			
1..1	—Identification number	M	an..17		R3005 R3033	
1..1	—Status	M	n..1	CL094		
1..1	—Address	M			R3002	
1..1	—City	M	an..35			
1..1	—Country	M	a2	CL718		
0..1	—Sub-division	O	an..35			
0..1	—Street name line 1	O	an..70			
0..1	—Postcode	C	an..17			C3034
0..1	—Street name line 2	O	an..70			
0..1	—Number	O	an..35			
0..1	—P.O. Box	O	an..70			
1..9	—Communication	M				
1..1	—Identifier	M	an..50		R3006	
1..1	—Type	M	an..3	CL707		
1..1	—Consignment (Master level)	M				
1..999	—Consignment (House level)	M				
0..1	—Total amount invoiced	C				C3038
1..1	—Value	M	n..16,2			
1..1	—Currency	M	a3	CL352		
1..1	—Total gross mass	M	n..16,6			
0..1	—Additions and deductions	C				C3037
1..1	—Amount	M				
1..1	—Value	M	n..16,2			
1..1	—Currency	M	a3	CL352		
0..1	—Additional fiscal references	O				
1..1	—VAT identification number	M	an..17			
1..1	—Role	M	an..3	CL756		
0..99	—Supporting documents	O			R3023	
1..1	—Reference number	M	an..70			
1..1	—Type	M	an4	CL013		
0..99	—Additional information	O			R3001 R3023	
0..1	—Code	O	an..17	CL701		
0..1	—Text	O	an..512			
0..9	—Additional supply chain actor	O			R3023	
1..1	—Identification number	M	an..17			
1..1	—Role	M	a..3	CL704		
1..1	—Consignee	M				
1..1	—Name	M	an..70			
0..1	—Identification number	O	an..17			
0..1	—Type of person	O	n1	CL729		
1..1	—Address	M			R3002	
1..1	—City	M	an..35			
1..1	—Country	M	a2	CL718		
0..1	—Sub-division	O	an..35			
0..1	—Street name line 1	O	an..70			
0..1	—Postcode	C	an..17			C3034
0..1	—Street name line 2	O	an..70			
0..1	—Number	O	an..35			
0..1	—P.O. Box	O	an..70			
0..9	—Communication	O				
1..1	—Identifier	M	an..50		R3006	
1..1	—Type	M	an..3	CL707		
1..99	—Goods item	M				
0..1	—Item amount invoiced	O				
1..1	—Value	M	n..16,2			
1..1	—Currency	M	a3	CL352		
1..1	—Goods item number	M	n..5		R3017	
0..1	—Type of goods	C	an..3	CL749		C3037

Occurs	Name	Status	Format	CL	Rules	Conditions
0..99	Supporting documents	O			R3023	
1..1	Reference number	M	an..70			
1..1	Type	M	an4	CL013		
0..99	Additional information	O			R3001 R3023	
0..1	Code	O	an..17	CL701		
0..1	Text	O	an..512			
0..9	Additional supply chain actor	O			R3023	
1..1	Identification number	M	an..17			
1..1	Role	M	a..3	CL704		
1..1	Commodity	M				
1..1	Description of goods	M	an..512			
0..1	Commodity code	C		CL706		Cxxxx
1..1	Harmonized System sub-heading code	M	an6			
0..1	Combined nomenclature code	O	an2			
0..1	Weight	O				
1..1	Gross mass	M	n..16,6			
1..1	Packages	M				
1..1	Number of packages	M	n..8			
1..1	Consignor	M				
1..1	Name	M	an..70			
0..1	Identification number	O	an..17			
0..1	Type of person	O	n1	CL729		
1..1	Address	M			R3002	
1..1	City	M	an..35			
1..1	Country	M	a2	CL718		
0..1	Sub-division	O	an..35			
0..1	Street name line 1	O	an..70			
0..1	Postcode	C	an..17			C3034
0..1	Street name line 2	O	an..70			
0..1	Number	O	an..35			
0..1	P.O. Box	O	an..70			
0..9	Communication	O				
1..1	Identifier	M	an..50		R3006	
1..1	Type	M	an..3	CL707		
1..1	Transport document (House level)	M				
1..1	Reference number	M	an..70			
1..1	Type	M	an4	CL754		
0..1	Reference number/UCR	O			R3023	
0..1	Reference number/UCR	M	an..35			
1..1	Declarant	M				
1..1	Name	M	an..70			
1..1	Identification number	M	an..17		R3005	
1..1	Address	M			R3002	
1..1	City	M	an..35			
1..1	Country	M	a2	CL718		
0..1	Sub-division	O	an..35			
0..1	Street name line 1	O	an..70			
0..1	Postcode	C	an..17			C3034
0..1	Street name line 2	O	an..70			
0..1	Number	O	an..35			
0..1	P.O. Box	O	an..70			
1..9	Communication	M				
1..1	Identifier	M	an..50		R3006	
1..1	Type	M	an..3	CL707		
0..99	HRCM screening results	O				
1..1	Result	M	an..3	CL726		
2..9	Screening method	M				
1..1	Method	M	an..3	CL724		
0..99	Additional information	O				
0..1	Code	O	an..17	CL752		
0..1	Text	O	an..512			
0..1	Type	O	an..3	CL703		
0..1	Authorized person	O				
1..1	Name	M	an..70			
1..1	Identification number	M	an..17			
1..1	Type of person	M	n1	CL729		
0..9	Binary file	O				
1..1	Identification	M	an..256			

Occurs	Name	Status	Format	CL	Rules	Conditions
1..1	Filename	M	an..256			
1..1	MIME	M	an..70			
0..1	Description	O	an..256			
0..1	Facility place	O				
1..1	Address	M				
1..1	City	M	an..35			
1..1	Country	M	a2	CL718		
0..1	Sub-division	O	an..35			
0..1	Street name line 1	O	an..70			
0..1	Postcode	O	an..9			C3034
0..1	Street name line 2	O	an..70			
0..1	Number	O	an..35			
0..1	P.O. Box	O	an..70			
0..1	Transport document (House level)	O				
1..1	Reference number	M	an..70			
1..1	Type	M	an4	CL754		

Occurs	Name	Status	Format	CL	Rules	Conditions
	IE3A32					
1..1	Document issue date	M	an20 (YYYY-MM-DDThh:mm:ssZ)			
0..1	Referral request reference	O	an..17			
1..1	MRN	M	an18		R3004	
1..1	Specific circumstance indicator	M	an3	CL742	R3024	
1..1	Addressed Member State	M				
1..1	Country	M	a2	CL717		
0..1	Representative	O			R3024	
1..1	Name	M	an..70			
1..1	Identification number	M	an..17		R3005 R3024	
1..1	Status	M	n..1	CL094		
1..1	Address	M			R3002	
1..1	City	M	an..35			
1..1	Country	M	a2	CL718		
0..1	Sub-division	O	an..35			
0..1	Street name line 1	O	an..70			
0..1	Postcode	C	an..17			C3034
0..1	Street name line 2	O	an..70			
0..1	Number	O	an..35			
0..1	P.O. Box	O	an..70			
1..9	Communication	M				
1..1	Identifier	M	an..50		R3006	
1..1	Type	M	an..3	CL707		
1..1	Consignment (Master level)	M				
1..999	Consignment (House level)	M				
0..1	Total amount invoiced	C				C3038
1..1	Value	M	n..16,2			
1..1	Currency	M	a3	CL352		
1..1	Total gross mass	M	n..16,6			
0..1	Additions and deductions	C				C3037
1..1	Amount	M				
1..1	Value	M	n..16,2			
1..1	Currency	M	a3	CL352		
0..1	Additional fiscal references	O				
1..1	VAT identification number	M	an..17			
1..1	Role	M	an..3	CL756		
0..99	Supporting documents	O			R3023	
1..1	Reference number	M	an..70			
1..1	Type	M	an4	CL013		
0..99	Additional information	O			R3001 R3023	
0..1	Code	O	an..17	CL701		
0..1	Text	O	an..512			
0..9	Additional supply chain actor	O			R3023	
1..1	Identification number	M	an..17			
1..1	Role	M	a..3	CL704		
1..1	Consignee	M				
1..1	Name	M	an..70			
0..1	Identification number	O	an..17			
0..1	Type of person	O	n1	CL729		
1..1	Address	M			R3002	
1..1	City	M	an..35			
1..1	Country	M	a2	CL718		
0..1	Sub-division	O	an..35			
0..1	Street name line 1	O	an..70			
0..1	Postcode	C	an..17			C3034
0..1	Street name line 2	O	an..70			
0..1	Number	O	an..35			
0..1	P.O. Box	O	an..70			
0..9	Communication	O				
1..1	Identifier	M	an..50		R3006	
1..1	Type	M	an..3	CL707		
1..99	Goods item	M				
0..1	Item amount invoiced	O				
1..1	Value	M	n..16,2			
1..1	Currency	M	a3	CL352		

Occurs	Name	Status	Format	CL	Rules	Conditions
1..1	Goods item number	M	n..5		R3017	
0..1	Type of goods	C	an..3	CL749	R3024	C3037
0..99	Supporting documents	O			R3023	
1..1	Reference number	M	an..70			
1..1	Type	M	an4	CL013		
0..99	Additional information	O			R3001 R3023	
0..1	Code	O	an..17	CL701		
0..1	Text	O	an..512			
0..9	Additional supply chain actor	O			R3023	
1..1	Identification number	M	an..17			
1..1	Role	M	a..3	CL704		
1..1	Commodity	M				
1..1	Description of goods	M	an..512			
0..1	Commodity code	C		CL706		Cxxxx
1..1	Harmonized System sub-heading code	M	an6			
0..1	Combined nomenclature code	O	an2			
0..1	Weight	O				
1..1	Gross mass	M	n..16,6			
1..1	Packages	M				
1..1	Number of packages	M	n..8			
1..1	Consignor	M				
1..1	Name	M	an..70			
0..1	Identification number	O	an..17			
0..1	Type of person	O	n1	CL729		
1..1	Address	M			R3002	
1..1	City	M	an..35			
1..1	Country	M	a2	CL718		
0..1	Sub-division	O	an..35			
0..1	Street name line 1	O	an..70			
0..1	Postcode	C	an..17			C3034
0..1	Street name line 2	O	an..70			
0..1	Number	O	an..35			
0..1	P.O. Box	O	an..70			
0..9	Communication	O				
1..1	Identifier	M	an..50		R3006	
1..1	Type	M	an..3	CL707		
1..1	Transport document (House level)	M				
1..1	Reference number	M	an..70		R3024	
1..1	Type	M	an4	CL754		
0..1	Reference number/UCR	O			R3023	
0..1	Reference number/UCR	M	an..35			
1..1	Declarant	M				
1..1	Name	M	an..70			
1..1	Identification number	M	an..17		R3005 R3024	
1..1	Address	M			R3002	
1..1	City	M	an..35			
1..1	Country	M	a2	CL718		
0..1	Sub-division	O	an..35			
0..1	Street name line 1	O	an..70			
0..1	Postcode	C	an..17			C3034
0..1	Street name line 2	O	an..70			
0..1	Number	O	an..35			
0..1	P.O. Box	O	an..70			
1..9	Communication	M				
1..1	Identifier	M	an..50		R3006	
1..1	Type	M	an..3	CL707		
0..99	HRCM screening results	O				
1..1	Result	M	an..3	CL726		
2..9	Screening method	M				
1..1	Method	M	an..3	CL724		
0..99	Additional information	O				
0..1	Code	O	an..17	CL752		
0..1	Text	O	an..512			
0..1	Type	O	an..3	CL703		
0..1	Authorized person	O				

Occurs	Name	Status	Format	CL	Rules	Conditions
1..1	—Name	M	an..70			
1..1	—Identification number	M	an..17			
1..1	—Type of person	M	n1	CL729		
0..9	—Binary file	O				
1..1	—Identification	M	an..256			
1..1	—Filename	M	an..256			
1..1	—MIME	M	an..70			
0..1	—Description	O	an..256			
0..1	—Facility place	O				
1..1	—Address	M				
1..1	—City	M	an..35			
1..1	—Country	M	a2	CL718		
0..1	—Sub-division	O	an..35			
0..1	—Street name line 1	O	an..70			
0..1	—Postcode	O	an..9			C3034
0..1	—Street name line 2	O	an..70			
0..1	—Number	O	an..35			
0..1	—P.O. Box	O	an..70			
0..1	—Transport document (House level)	O				
1..1	—Reference number	M	an..70			
1..1	—Type	M	an4	CL754		

Occurs	Name	Status	Format	CL	Rules	Conditions
	IE3R02					
1..1	Document issue date	M	an20 (YYYY-MM-DDThh:mm:ssZ)			
1..1	MRN	M	an18			
1..1	Responsible Member State	M				
1..1	Country	M	a2	CL717		
0..1	Representative	O				
1..1	Identification number	M	an..17			
0..1	Transport document (Master level)	O				
1..1	Reference number	M	an..70			
1..1	Type	M	an4	CL754		
1..1	Declarant	M				
1..1	Identification number	M	an..17			
1..99	Additional information response	M				
1..1	Referral request reference	M	an..17			
0..99	Additional information	O				
0..1	Code	O	an..17	CL752		
0..1	Text	O	an..512			
0..1	Information type	O	an..3	CL703		
0..9	Binary attachment	O				
1..1	Identification	M	an..256			
1..1	Filename	M	an..256			
1..1	MIME	M	an..70			
0..1	Description	O	an..256			
0..1	Transport document (House level)	O				
1..1	Reference number	M	an..70			
1..1	Type	M	an4	CL754		

Occurs	Name	Status	Format	CL	Rules	Conditions
	IE3R03					
1..1	Document issue date	M	an20 (YYYY-MM-DDThh:mm:ssZ)			
1..1	MRN	M	an18			
1..1	Responsible Member State	M				
1..1	Country	M	a2	CL717		
0..1	Representative	O				
1..1	Identification number	M	an..17			
0..1	Transport document (Master level)	O				
1..1	Reference number	M	an..70			
1..1	Type	M	an4	CL754		
1..1	Declarant	M				
1..1	Identification number	M	an..17			
1..99	HRCM screening results	M				
1..1	Referral request reference	M	an..17			
1..1	Result	M	an..3	CL726		
2..9	Screening method	M				
1..1	Method	M	an..3	CL724		
0..99	Additional information	O				
0..1	Code	O	an..17	CL752		
0..1	Text	O	an..512			
0..1	Information type	O	an..3	CL703		
0..1	Authorised person	O				
1..1	Name	M	an..70			
1..1	Identification number	M	an..17			
1..1	Type of person	M	n1	CL729		
0..9	Binary attachment	O				
1..1	Identification	M	an..256			
1..1	Filename	M	an..256			
1..1	MIME	M	an..70			
0..1	Description	O	an..256			
0..1	Screening facility	O				
1..1	Address	M			R3002	
1..1	City	M	an..35			
1..1	Country	M	a2	CL718		
0..1	Sub-division	O	an..35			
0..1	Street name line 1	O	an..70			
0..1	Postcode	O	an..9			C3034
0..1	Street name line 2	O	an..70			
0..1	Number	O	an..35			
0..1	P.O. Box	O	an..70			
0..1	Transport document (House level)	O				
1..1	Reference number	M	an..70			
1..1	Type	M	an4	CL754		

Occurs	Name	Status	Format	CL	Rules	Conditions
	IE3Q04					
1..1	Document issue date	M	an20 (YYYY-MM-DDThh:mm:ssZ)			
1..1	MRN	M	an18			
0..1	Addressed Member State	O				
1..1	Country	M	a2	CL717		
0..1	Representative	O				
1..1	Identification number	M	an..17			
0..1	Transport document (Master level)	O				
1..1	Reference number	M	an..70			
1..1	Type	M	an4	CL754		
1..1	Declarant	M				
1..1	Identification number	M	an..17			
0..1	Customs office of first entry	O				
1..1	Reference number	M	an..8	CL141		

End of document